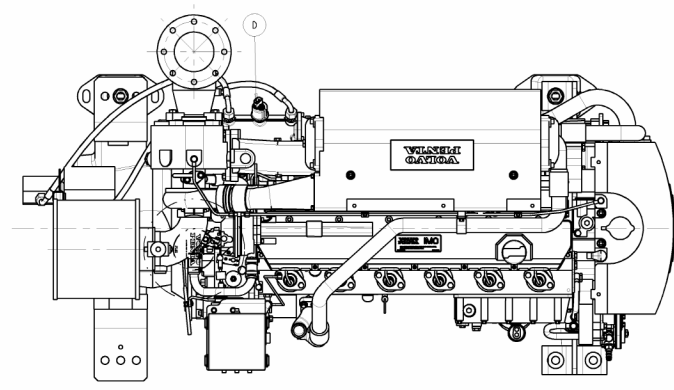
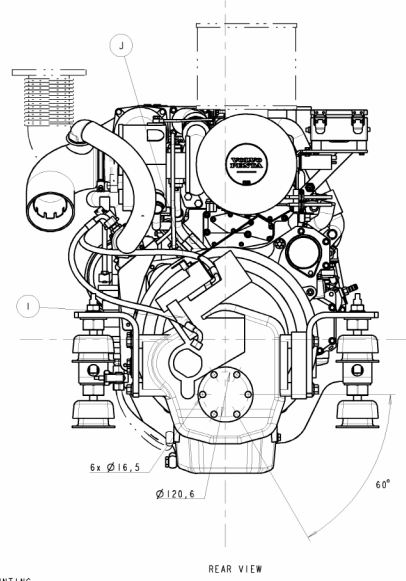
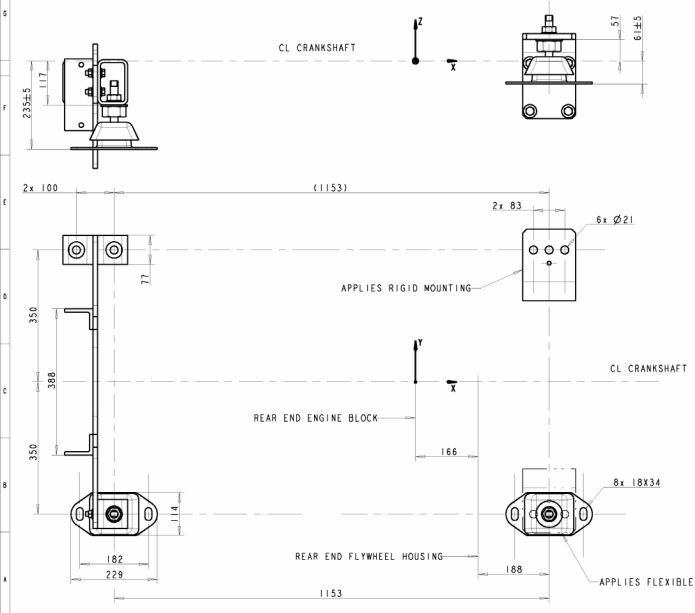


APPLIES WET EXHAUST ELBOW ONLY



SCALE 1:5

- A SEA WATER INLET
 - B SEA WATER OUTLET (APPLIES DRY EXHAUST ELBOW)
 - C ANODE
 - D PRESSURE SENDER REVERSE GEAR (OPTION)
 - E WET EXHAUST ELBOW FOR 5" HOSE (OPTION)
 - F INLET FLOW FROM REVERSE GEAR COOLER
 - G HOSE BETWEEN OILCOOLER AND WET EXHAUST ELBOW
 - H SEA WATER DRAIN
 - I CONNECTION FOR 33-CABLE FOR REVERSE GEAR
 - J CONNECTION SLIP VALVE FOR 33-CABLE (OPTION)
 - K PROP. SHAFT FLANGE, MAX ∅70 MM (OPTION)
 - L RUBBER MOUNTING (OPTION)
- CONSEQUENCE CLASS [4] APPLIES TO PROPERTIES NOT MARKED
- DRY MASS APPROX. 830 KG
- ☛ CENTER OF GRAVITY

FOR OTHER DIMENSIONS, SEE FOLLOWING DRAWINGS:
 3590792, D7A TA / D7C TA

The copying, distribution and utilization of this document is limited to the project for which it was prepared. It is not to be used for other projects without the written consent of the manufacturer.		UNICOLE - DESIGNATIONS AND GENERAL DRAWING NUMBER 315 9023 001	
INSTALLATION DRAWING ENGINE D7A TA/D7C TA, 2F280 RE-VERSION		3590759 02	
VOLVO PENTA		1111	