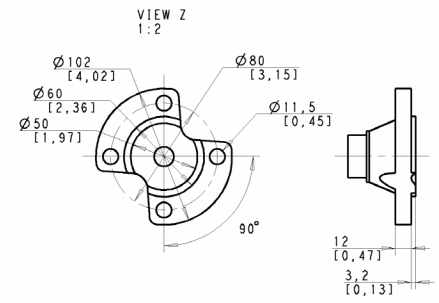
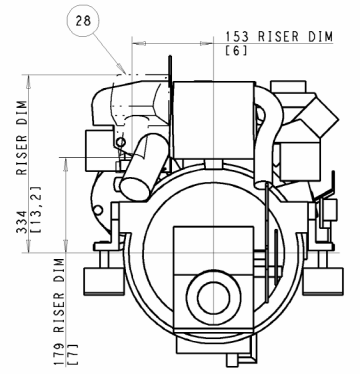
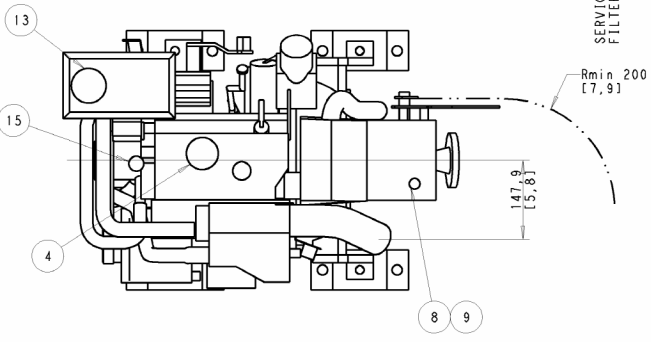
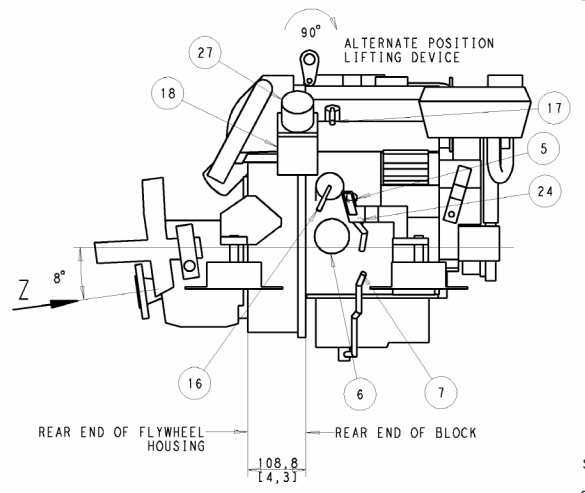
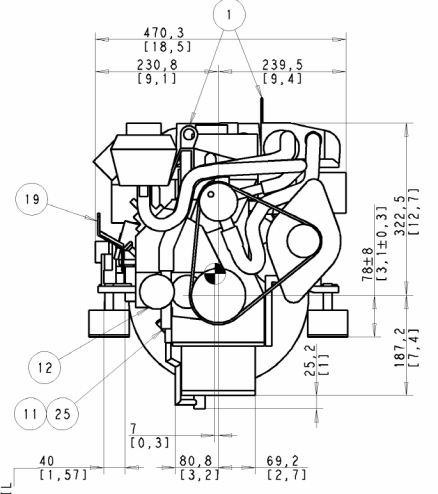
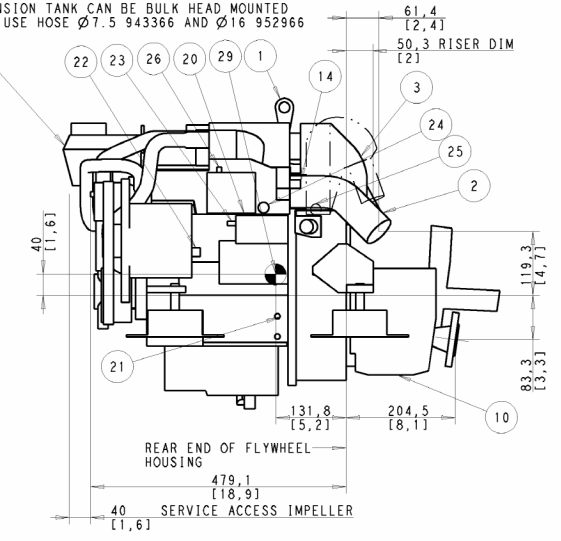
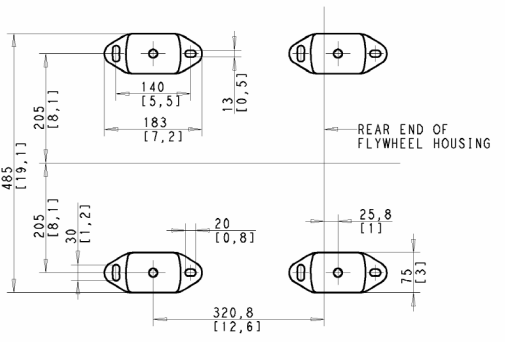


EXPANSION TANK CAN BE BULK HEAD MOUNTED
THEN USE HOSE Ø7.5 943366 AND Ø16 952966



SCALE 1:5
OIL CAPACITY INCLUDING OIL FILTER: 2,8 LITERS
FRESHWATER SYSTEM CAPACITY: 3,0 LITERS
WEIGHTS:
DRY 127 kg
OIL & WATER 134 kg
DIMENSION IN MILLIMETRES AND [INCHES]

| NR | ITEM |
|----|---|
| 1 | LIFTING DEVICE |
| 2 | EXHAUST ELBOW FOR HOSE I.D 45[1,75] |
| 3 | AIR FILTER (SILENCER) |
| 4 | OIL FILLING |
| 5 | OIL DIPSTICK ENGINE |
| 6 | OIL FILTER |
| 7 | OIL DRAIN (WITH PUMP) ENGINE I.D 8 [0.35] |
| 8 | OIL DIPSTICK REVERSE GEAR |
| 9 | OIL FILLER CAP REVERSE GEAR |
| 10 | OIL DRAIN REVERSE GEAR |
| 11 | SEAWATER INLET FOR HOSE I.D 19[0,75] |
| 12 | SEA WATER PUMP |
| 13 | WATER FILLER CAP FRESH WATER |
| 14 | HOTWATER OUTLET |
| 15 | HOTWATER INLET |
| 16 | FUEL CONNECTION FOR HOSE I.D 10 [3/8] |
| 17 | FUEL RETURN CONNECTION FOR HOSE I.D 10 [3/8] |
| 18 | FUEL FILTER |
| 19 | SPEED CONTROL LEVER |
| 20 | CONNECTION BOX FOR EXTENSION CABLE |
| 21 | BATTERY MINUS (-) CONNECTION |
| 22 | PLUS (B+) CONNECTION FOR CHARGING DISTRIBUTOR |
| 23 | STARTER BATTERY PLUS (+) CONNECTION |
| 24 | WATER DRAIN FRESH WATER |
| 25 | WATER DRAIN SEAWATER |
| 26 | AUTOMATIC FUSE RESET |
| 27 | HAND PRIMER PUMP |
| 28 | RISER (OPTIONAL) |
| 29 | CENTRE OF GRAVITY |



| | | |
|---|---|-------------------------------|
| <p>The copying, distribution and utilization of this document as well as the communication of its contents to others without express authorization is prohibited. Offenders will be held liable for payment of damages. All rights reserved to the design holder or its licensor, utility model or trademark design registration.</p> | <p>SYMBOLS, DESIGNATIONS AND GENERAL DRAWING METHODS: STD 101-5005 AND STD 5023-505</p> | |
| | <p>Document title ENGINE DIMENSIONS D1-20/MS10A</p> | |
| <p>Document type DIMENSION DRAWING Docu: General Dimensioning</p> | | <p>Sheet No 01</p> |
| <p>Document No 3591388</p> | | <p>Scale 1:1</p> |

